

GWAL-CLF Large Flange Closed End Threaded Insert

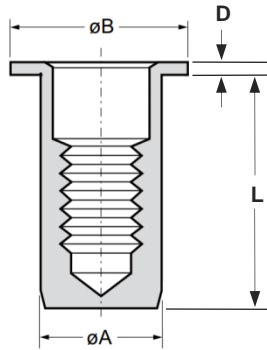
Aluminium · Large flange · Round · Closed end
M3 - M8

Features

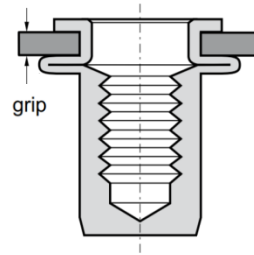
- Designed to provide load bearing threads in thin sheet materials
- Large flange head provides a load bearing surface and reinforces the hole to prevent push-out
- Closed end prevents the ingress of dirt and fluids into thread and electrical circuits

Material

- Aluminium 5052



Before Placement



After Placement

Part No.	Thread Size	Grip Range		Hole Size	øA	øB	D	L
		min.	max.					
GWAL-CLFM3-0520	M3	0.5	2.0	5.0	5.0	8.0	0.75	13.25
GWAL-CLFM4-0530	M4	0.5	3.0	6.0	6.0	10.0	0.75	14.75
GWAL-CLFM4-3045		3.0	4.5					16.25
GWAL-CLFM5-0530	M5	0.5	3.0	7.0	7.0	11.0	1.0	18.0
GWAL-CLFM5-3055		3.0	5.5					20.5
GWAL-CLFM6-0530	M6	0.5	3.0	9.0	9.0	13.0	1.5	21.5
GWAL-CLFM6-3055		3.0	5.5					24.5
GWAL-CLFM8-0530	M8	0.5	3.0	11.0	11.0	16.0	1.5	22.5
GWAL-CLFM8-3055		3.0	5.5					25.5

Thread Size	Max. torque	Pull-out	Torque-to-turn	Shear strength
	Nm max.	Kn	Nm	kN
M3	~1.9	> ~3.1	~0.8	~0.6
M4	~4.9	> ~4.5	~1.4	~1.1
M5	~4.9	> ~5.2	~1.5	~1.6
M6	~16.0	> ~10.5	~3.2	~2.4
M8	~33.0	> ~15.0	~5.3	~2.9